



CERTIFICATE OF QUALITY

EverFast™ Type HE Cement

NZS 3122:2009



Our
NZ made
cement is
genuine
NZ grade
cement.

Issued to: Technical Sales Manager

Test Report No: 22#73

info@goldenbay.co.nz

Code	Week Ending	Specific Surface Area	Normal Consistency	Initial Set	Final Set	Soundness	Compressive Strength										Free Lime	Sodium Equivalent (NaEq)	Sulphur Trioxide (SO3)
							ISO-CEN				Concrete								
							1 Day	3 days	7 days	28 days	Slump	1 Day	3 days	7 days	28 days				
Mean		516	33.3	118	3:14	1	21.8	37.2	46.4	64.8	84.0	13.0	31.4	39.4	51.1	1.8	0.56	2.4	
Standard Deviation		12	0.6	12	0:13	0.4	1.4	1.8	2.0	0.9	9.5	1.6	2.2	2.0	1.9	0.3	0.02	0.09	
Min		500	32.3	90	2:45	0	18.1	34.1	42.3	63.5	60.0	9.5	28.5	36.5	48.9	1.3	0.52	2.3	
Max		545	34.5	135	3:30	2	24.4	41.0	50.8	66.4	100.0	16.4	39.1	43.6	56.7	2.6	0.60	2.6	
NZS 3122:2009 Requirements				45 min	6:00 max	5 max		25.0 min	40.0 min								0.6 max	3.5 max	
Units		m2/kg	%	minutes	hrs:mins	mm	Mpa	MPa	MPa	MPa	mm	Mpa	MPa	MPa	MPa	%	%	%	
220805-916-HE	05/08/22	515	33.8	90	3:30	1	18.1				90	9.9	29.0	38.5		1.5	0.55	2.4	
220718-023-HE	18/07/22	520	33.9	120	3:30	1	22.9	39.8	49.1		90	14.0	32.3	38.7		1.5	0.56	2.4	
220710-840-HE	10/07/22	545	33.6	135	3:30	2	20.8	38.2	48.1		90	13.7	32.0	39.6	51.3	1.8	0.58	2.6	
220626-443-HE	26/06/22	515	33.7	135	3:30	1	21.2	38.8	48.5		75	11.5	30.6	40.9	49.4	2.0	0.60	2.4	
220612-576-HE	12/06/22	520	32.9	105	3:00	1	21.1	38.3	47.1	65.8	90	10.5	31.4	39.5	50.7	2.0	0.57	2.4	
220602-134-HE	02/06/22	505	34.3	120	3:15	2	20.4	35.1	47.8	66.1	80	12.3	29.2	38.2	49.8	2.1	0.57	2.4	
220518-116-HE	18/05/22	535	34.5	135	3:15	1	21.3	35.9	50.8	66.4	60	13.9	34.1	41.5	56.7	2.6	0.55	2.3	
220503-430-HE	03/05/22	510	33.2	120	3:30	1	21.2	35.7	44.2	65.9	80	12.4	32.1	40.9	50.8	1.8	0.57	2.3	
220416-979-HE	16/04/22	530	33.3	120	3:30	1	21.4	37.0	45.9	64.7	90	13.1	28.5	38.6	50.1	1.8	0.56	2.5	
220404-212-HE	04/04/22	510	33.4	120	3:15	1	21.7	36.9	46.2	63.5	70	14.2	31.6	37.4	51.7	1.9	0.56	2.4	
220322-792-HE	22/03/22	505	33.7	120	2:45	2	21.0	38.4	48.1	65.7	80	14.2	31.4	39.0	49.6	2.3	0.56	2.4	
220306-135-HE	06/03/22	525	34.4	105	3:30	1	22.5	38.8	46.5	64.9	70	16.0	32.8	43.6	51.3	1.7	0.57	2.5	
220221-650-HE	21/02/22	510	33.7	120	3:15	2	24.4	41.0	47.8	63.9	80	16.4	39.1	42.8	49.5	1.4	0.56	2.4	
220214-909-HE	14/02/22	500	33.8	105	3:00	1	22.2	37.3	47.7	63.9	75	9.5	32.0	39.7	53.6	1.6	0.55	2.6	
220129-099-HE	29/01/22	505	32.6	120	3:00	1	22.6	39.2	46.2	63.7	80	13.1	33.8	42.1	53.3	1.6	0.56	2.5	
220114-467-HE	14/01/22	520	32.8	120	3:00	1	22.8	39.7	46.8	65.2	100	13.7	31.6	37.2	48.9	1.3	0.52	2.3	
211229-872-HE	29/12/21	540	32.9	135	3:30	0	21.6	37.4	46.6	63.7	80	13.1	33.3	43.1	52.4	1.3	0.53	2.3	
211211-596-HE	11/12/21	510	33.0	120	3:15	1	21.2	35.7	43.5	64.7	90	13.2	29.2	38.6	51.2	2.0	0.56	2.4	
211130-967-HE	30/11/21	515	33.2	120	3:00	1	19.8	35.6	43.0	65.7	90	12.4	30.9	38.5	49.1	1.9	0.57	2.4	
211116-228-HE	16/11/21	530	33.3	120	3:15	1	23.0	34.6	42.3	64.1	90	13.4	29.5	39.0	50.2	2.2	0.55	2.4	
211104-487-HE	04/11/21	510	33.2	120	3:00	1	24.3	37.6	45.0	64.9	90	14.7	30.7	39.1	51.6	1.4	0.55	2.6	
211022-786-HE	22/10/21	510	32.4	120	3:00	1	22.2	34.1	44.3	64.6	90	12.2	30.3	36.5	49.3	1.8	0.54	2.4	
211006-076-HE	06/10/21	505	32.3	105	3:15	0	21.3	35.5	46.2	64.1	90	13.6	30.1	37.5	53.1	1.8	0.55	2.5	
210922-521-HE	22/09/21	505	32.5	90	3:15	1	23.1	35.2	46.1	64.1	80	12.7	30.0	38.4	51.7	2.1	0.56	2.5	
210907-031-HE	07/09/21	500	32.5	120	3:15	1	22.7	36.5	47.1	64.0	100	12.5	29.1	36.5	49.3	1.9	0.56	2.4	

The above samples were tested as received in accordance with the current terms of accreditation and methods stated in NZS 3122:2009 with the exception of:

- Chemical Analysis to ASTM C114-18
- Concrete Compressive Strength test results outside the scope of accreditation

Sample retested
-No result available at time of certificate issue

This Report must not be reproduced except in full

Raki Harding
Quality Manger



Portland Works, Portland, Whangarei 0178

Date issued: 19/08/22

Page 1 of 3

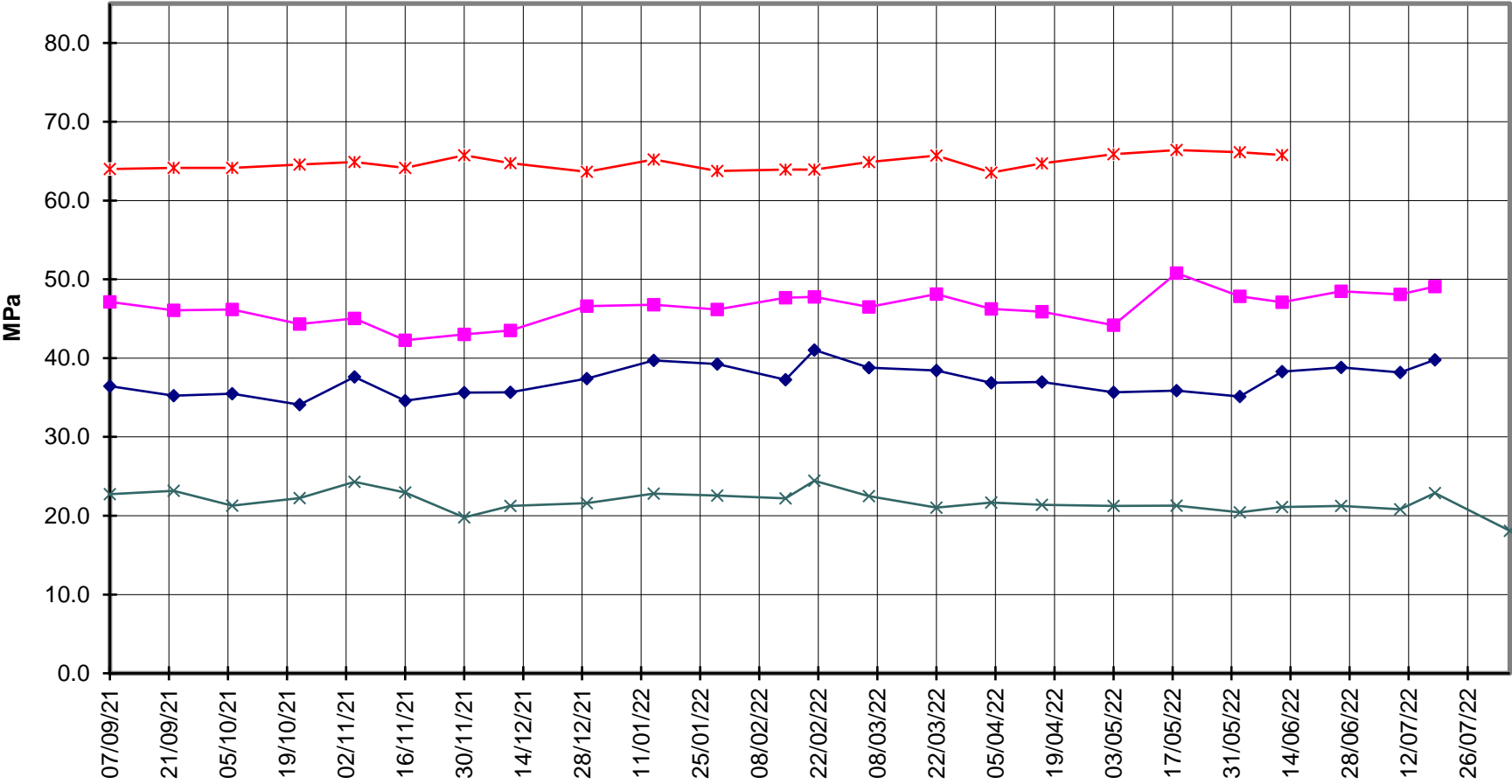


EverFast™ Type HE Cement



Compressive Strength ISO-CEN Mortar

—x— 28 Days —■— 7 Days —◆— 3 Days —x— 1 Day





EverFast™ Type HE Cement



Compressive Strength Concrete

—x— 28 Days —■— 7 Days —◆— 3 Days —x— 1 Day —*— Slump

