



CERTIFICATE OF QUALITY

EverFast™ Type HE Cement

NZS 3122:2009



Our
NZ made
cement is
genuine
NZ grade
cement.

Issued to: *Technical Sales Manager*

Test Report No: 22#60

info@goldenbay.co.nz

| Code | Week Ending | Specific Surface Area | Normal Consistency | Initial Set | Final Set | Soundness | Compressive Strength | | | | | | | | Free Lime | Sodium Equivalent (NaEq) | Sulphur Trioxide (SO3) | |
|----------------------------|-------------|-----------------------|--------------------|-------------|-----------|-----------|----------------------|----------|----------|---------|----------|-------|--------|--------|-----------|--------------------------|------------------------|---------|
| | | | | | | | ISO-CEN | | | | Concrete | | | | | | | |
| | | | | | | | 1 Day | 3 days | 7 days | 28 days | Slump | 1 Day | 3 days | 7 days | | | | 28 days |
| Mean | | 514 | 33.2 | 116 | 3:11 | 1 | 22.0 | 37.0 | 46.2 | 64.8 | 85.0 | 13.2 | 31.2 | 39.2 | 51.1 | 1.9 | 0.56 | 2.4 |
| Standard Deviation | | 11 | 0.6 | 10 | 0:11 | 0.4 | 1.1 | 1.7 | 1.8 | 0.8 | 9.8 | 1.4 | 2.6 | 2.1 | 2.0 | 0.3 | 0.02 | 0.08 |
| Min | | 500 | 32.3 | 90 | 2:45 | 0 | 19.8 | 34.1 | 42.3 | 63.5 | 60.0 | 9.5 | 24.6 | 35.6 | 48.5 | 1.3 | 0.52 | 2.3 |
| Max | | 540 | 34.5 | 135 | 3:30 | 2 | 24.4 | 41.0 | 50.8 | 66.4 | 100.0 | 16.4 | 39.1 | 43.6 | 56.7 | 2.6 | 0.58 | 2.6 |
| NZS 3122:2009 Requirements | | | | 45 min | 6:00 max | 5 max | | 25.0 min | 40.0 min | | | | | | | | 0.6 max | 3.5 max |
| Units | | m2/kg | % | minutes | hrs:mins | mm | Mpa | MPa | MPa | MPa | mm | Mpa | MPa | MPa | MPa | % | % | % |
| 220612-576-HE | 12/06/22 | 520 | 32.9 | 105 | 3:00 | 1 | 21.1 | 38.3 | 47.1 | | 90 | 10.5 | 31.4 | 39.5 | | 2.0 | 0.57 | 2.4 |
| 220602-134-HE | 02/06/22 | 505 | 34.3 | 120 | 3:15 | 2 | 20.4 | 35.1 | 47.8 | | 80 | 12.3 | 29.2 | 38.2 | | 2.1 | 0.57 | 2.4 |
| 220518-116-HE | 18/05/22 | 535 | 34.5 | 135 | 3:15 | 1 | 21.3 | 35.9 | 50.8 | 66.4 | 60 | 13.9 | 34.1 | 41.5 | 56.7 | 2.6 | 0.55 | 2.3 |
| 220503-430-HE | 03/05/22 | 510 | 33.2 | 120 | 3:30 | 1 | 21.2 | 35.7 | 44.2 | 65.9 | 80 | 12.4 | 32.1 | 40.9 | 50.8 | 1.8 | 0.57 | 2.3 |
| 220416-979-HE | 16/04/22 | 530 | 33.3 | 120 | 3:30 | 1 | 21.4 | 37.0 | 45.9 | 64.7 | 90 | 13.1 | 28.5 | 38.6 | 50.1 | 1.8 | 0.56 | 2.5 |
| 220404-212-HE | 04/04/22 | 510 | 33.4 | 120 | 3:15 | 1 | 21.7 | 36.9 | 46.2 | 63.5 | 70 | 14.2 | 31.6 | 37.4 | 51.7 | 1.9 | 0.56 | 2.4 |
| 220322-792-HE | 22/03/22 | 505 | 33.7 | 120 | 2:45 | 2 | 21.0 | 38.4 | 48.1 | 65.7 | 80 | 14.2 | 31.4 | 39.0 | 49.6 | 2.3 | 0.56 | 2.4 |
| 220306-135-HE | 06/03/22 | 525 | 34.4 | 120 | 3:30 | 1 | 22.5 | 38.8 | 46.5 | 64.9 | 70 | 16.0 | 32.8 | 43.6 | 51.3 | 1.7 | 0.57 | 2.5 |
| 220221-650-HE | 21/02/22 | 510 | 33.7 | 120 | 3:15 | 2 | 24.4 | 41.0 | 47.8 | 63.9 | 80 | 16.4 | 39.1 | 42.8 | 49.5 | 1.4 | 0.56 | 2.4 |
| 220214-909-HE | 14/02/22 | 500 | 33.8 | 105 | 3:00 | 1 | 22.2 | 37.3 | 47.7 | 63.9 | 75 | 9.5 | 32.0 | 39.7 | 53.6 | 1.6 | 0.55 | 2.6 |
| 220129-099-HE | 29/01/22 | 505 | 32.6 | 120 | 3:00 | 1 | 22.6 | 39.2 | 46.2 | 63.7 | 80 | 13.1 | 33.8 | 42.1 | 53.3 | 1.6 | 0.56 | 2.5 |
| 220114-467-HE | 14/01/22 | 520 | 32.8 | 120 | 3:00 | 1 | 22.8 | 39.7 | 46.8 | 65.2 | 100 | 13.7 | 31.6 | 37.2 | 48.9 | 1.3 | 0.52 | 2.3 |
| 211229-872-HE | 29/12/21 | 540 | 32.9 | 135 | 3:30 | 0 | 21.6 | 37.4 | 46.6 | 63.7 | 80 | 13.1 | 33.3 | 43.1 | 52.4 | 1.3 | 0.53 | 2.3 |
| 211211-596-HE | 11/12/21 | 510 | 33.0 | 105 | 3:15 | 1 | 21.2 | 35.7 | 43.5 | 64.7 | 90 | 13.2 | 29.2 | 38.6 | 51.2 | 2.0 | 0.56 | 2.4 |
| 211130-967-HE | 30/11/21 | 515 | 33.2 | 120 | 3:00 | 1 | 19.8 | 35.6 | 43.0 | 65.7 | 90 | 12.4 | 30.9 | 38.5 | 49.1 | 1.9 | 0.57 | 2.4 |
| 211116-228-HE | 16/11/21 | 530 | 33.3 | 120 | 3:15 | 1 | 23.0 | 34.6 | 42.3 | 64.1 | 90 | 13.4 | 29.5 | 39.0 | 50.2 | 2.2 | 0.55 | 2.4 |
| 211104-487-HE | 04/11/21 | 510 | 33.2 | 120 | 3:00 | 1 | 24.3 | 37.6 | 45.0 | 64.9 | 90 | 14.7 | 30.7 | 39.1 | 51.6 | 1.4 | 0.55 | 2.6 |
| 211022-786-HE | 22/10/21 | 510 | 32.4 | 120 | 3:00 | 1 | 22.2 | 34.1 | 44.3 | 64.6 | 90 | 12.2 | 30.3 | 36.5 | 49.3 | 1.8 | 0.54 | 2.4 |
| 211006-076-HE | 06/10/21 | 505 | 32.3 | 105 | 3:15 | 0 | 21.3 | 35.5 | 46.2 | 64.1 | 90 | 13.6 | 30.1 | 37.5 | 53.1 | 1.8 | 0.55 | 2.5 |
| 210922-521-HE | 22/09/21 | 505 | 32.5 | 90 | 3:15 | 1 | 23.1 | 35.2 | 46.1 | 64.1 | 80 | 12.7 | 30.0 | 38.4 | 51.7 | 2.1 | 0.56 | 2.5 |
| 210907-031-HE | 07/09/21 | 500 | 32.5 | 120 | 3:15 | 1 | 22.7 | 36.5 | 47.1 | 64.0 | 100 | 12.5 | 29.1 | 36.5 | 49.3 | 1.9 | 0.56 | 2.4 |
| 210824-507-HE | 24/08/21 | 530 | 32.7 | 120 | 3:15 | 2 | 22.2 | 39.0 | 46.3 | 65.6 | 90 | 12.0 | 31.9 | 38.3 | 50.5 | 1.9 | 0.57 | 2.4 |
| 210808-941-HE | 08/08/21 | 515 | 32.9 | 105 | 3:15 | 1 | 22.5 | 37.7 | 45.0 | 65.2 | 100 | 13.3 | 24.6 | 35.6 | 48.5 | 2.1 | 0.57 | 2.4 |
| 210725-285-HE | 25/07/21 | 515 | 33.2 | 120 | 3:00 | 1 | 21.9 | 36.1 | 47.8 | 65.8 | 90 | 13.2 | 32.7 | 40.7 | 53.1 | 1.9 | 0.58 | 2.3 |
| 210713-720-HE | 13/07/21 | 500 | 33.4 | 105 | 3:15 | 1 | 22.2 | 36.3 | 46.3 | 65.5 | 90 | 14.4 | 29.2 | 38.2 | 49.0 | 2.0 | 0.57 | 2.4 |

The above samples were tested as received in accordance with the current terms of accreditation and methods stated in NZS 3122:2009 with the exception of:

- Chemical Analysis to ASTM C114-18
- Concrete Compressive Strength test results outside the scope of accreditation

Sample retested

-No result available at time of certificate issue

This Report must not be reproduced except in full

Vincent Lane
Works Chemist



Portland Works, Portland, Whangarei 0178

Date issued: 01/07/22

Page 1 of 3

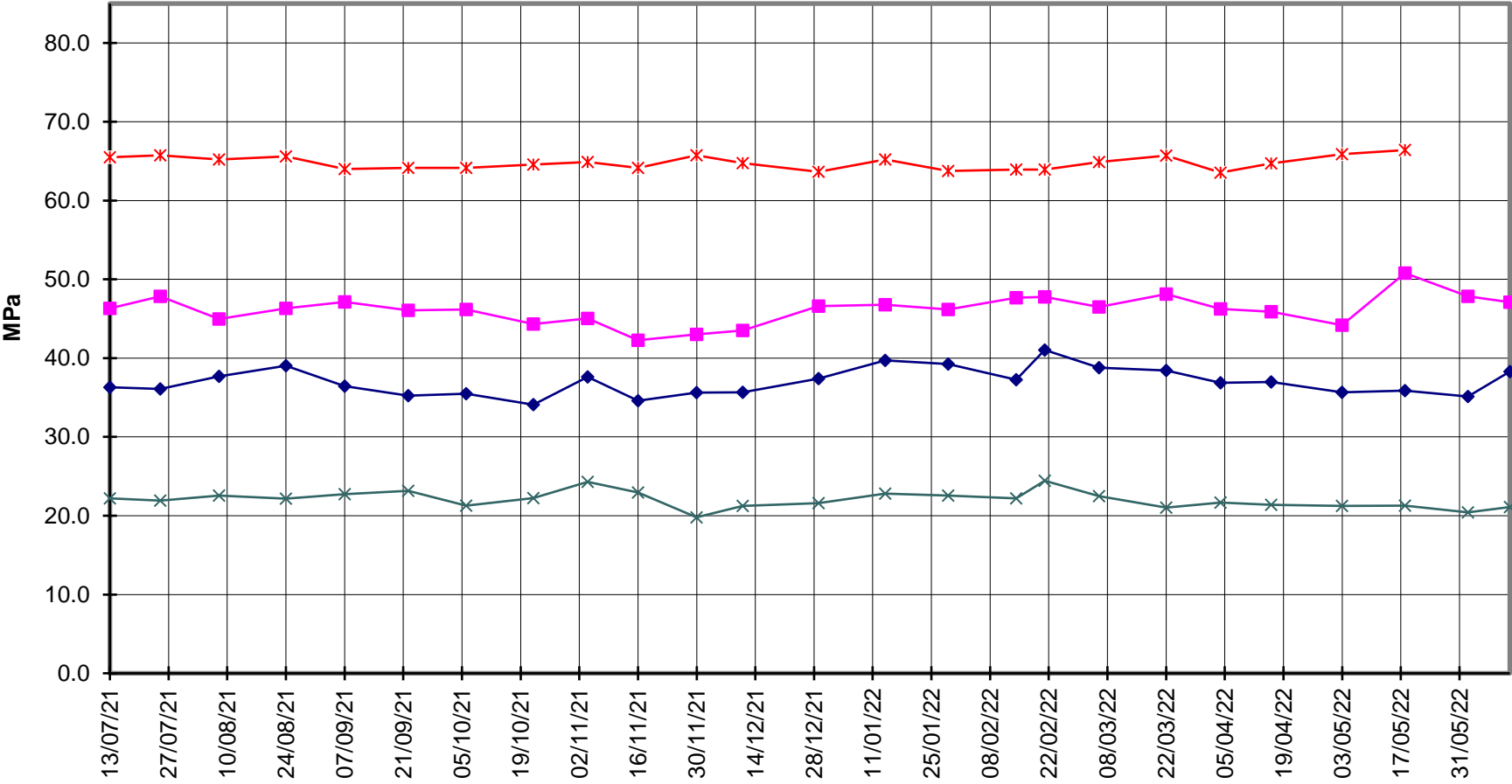


EverFast™ Type HE Cement



Compressive Strength ISO-CEN Mortar

—x— 28 Days —■— 7 Days —◆— 3 Days —x— 1 Day





**EverFast™
Type HE Cement**



Compressive Strength Concrete

