

Golden Bay Cement

CERTIFICATE OF QUALITY

EverSure™ Type GP Cement

NZS3122:2009 (Bulk Despatch)



Our
NZ made
cement is
genuine
NZ grade
cement.

Issued to: National Sales Manager

Test Report No: 20#165

info@goldenbay.co.nz

Code	Week Ending / Voyage	Specific Surface Area	Normal Consistency	Initial Set	Final Set	Soundness	Compressive Strength							Free Lime	Sodium Equivalent (NaEq)	Sulphur Trioxide (SO3)
							ISOCEN			Concrete						
							3 days	7 days	28 days	Slump	3 days	7 days	28 days			
Mean		343	29.1	131	3:23	1	32.6	45.8	65.3	91.3	24.4	33.7	44.8	2.1	0.55	2.2
Standard Deviation		9	0.1	8	0:07	0.5	1.3	1.4	1.0	3.1	1.3	0.8	1.5	0.2	0.02	0.02
Min		320	29.0	120	3:15	0	30.4	43.5	64.1	85.0	22.8	32.7	43.2	1.6	0.51	2.1
Max		360	29.2	150	3:30	2	35.0	49.1	67.0	95.0	26.8	35.5	47.2	2.6	0.59	2.3
NZS 3122:2009 Requirements				45 min	6:00 max	5 max		35.0 min	45.0 min						0.6 max	3.5 max
Units		m2/kg	%	minutes	hrs:mins	mm	MPa	MPa	MPa	mm	MPa	MPa	MPa	%	%	%
200912-850-GP	12/09/20	335	29.0	120	3:15	1	30.6							2.3	0.55	2.2
200909-848-GP	9/09/20	350	29.0	135	3:15	1	30.4			85.0	23.5			2.1	0.55	2.2
200903-582-GP	03/09/20	340	29.0	135	3:15	1	30.6	43.6						1.9	0.54	2.2
200830-530-GP	30/08/20	335	29.0	135	3:15	1	31.6	43.5		90	23.5	33.7		2.2	0.58	2.1
200825-155-GP	25/08/20	355	29.1	135	3:15	2	31.9	44.8		90	22.8	32.8		2.1	0.58	2.2
200822-157-GP	22/08/20	355	29.1	135	3:30	1	32.7	45.2						2.0	0.59	2.2
200821-796-GP	21/08/20	335	29.1	120	3:30	1	33.1	46.8						1.8	0.56	2.2
200817-794-GP	17/08/20	345	29.1	120	3:15	0	33.4	45.8		90	23.8	33.8		1.9	0.57	2.1
200813-457-GP	13/08/20	345	29.2	135	3:30	1	32.5	45.4	64.1	95	23.5	33.5	43.2	2.5	0.55	2.2
200811-455-GP	11/08/20	330	29.2	135	3:30	1	32.8	46.3	64.3					2.1	0.55	2.2
200807-086-GP	07/08/20	340	29.0	135	3:30	1	31.7	45.3	66.2					2.2	0.56	2.3
200804-084-GP	04/08/20	345	29.1	135	3:15	0	32.2	46.0	65.5	95	23.5	32.7	44.4	2.0	0.54	2.2
200731-794-GP	31/07/20	335	29.0	135	3:15	1	31.9	44.6	66.1	90	23.7	33.8	44.5	1.8	0.52	2.2
200729-796-GP	29/07/20	320	29.0	135	3:30	1	30.7	43.6	64.8					1.7	0.54	2.2
200725-317-GP	25/07/20	335	29.1	135	3:30	2	32.3	47.2	66.5					1.9	0.55	2.2
200722-314-GP	22/07/20	340	29.1	150	3:30	1	33.7	47.6	66.6	90	26.8	35.5	46.4	1.9	0.52	2.1
200717-032-GP	17/07/20	345	29.1	135	3:30	1	34.1	47.1	65.1	90	25.8	34.0	43.6	2.0	0.53	2.1
200712-034-GP	12/07/20	340	29.2	135	3:30	2	33.6	46.5	65.3					2.4	0.53	2.2
200708-618-GP	08/07/20	345	29.0	135	3:15	2	34.2	49.1	64.5					2.3	0.54	2.2
200703-616-GP	03/07/20	345	29.0	135	3:30	2	32.6	46.0	64.2	95	25.8	33.3	47.2	2.6	0.53	2.2
200701-257-GP	01/07/20	350	29.1	120	3:30	1	31.7	44.0	64.6					2.3	0.53	2.2
200628-255-GP	28/06/20	360	29.0	135	3:30	2	35.0	46.1	67.0	90	26.0	33.4	45.8	1.9	0.55	2.2
200626-089-GP	26/06/20	345	29.1	120	3:15	1	34.1	47.0	65.0					2.1	0.58	2.2
200621-901-GP	21/06/20	355	29.1	120	3:15	1	33.9	46.4	66.5	95	23.9	34.2	43.3	2.1	0.55	2.2
200618-536-GP	18/06/20	340	29.2	120	3:30	1	33.3	44.8	64.2					1.6	0.51	2.2

This Report must not be reproduced except in full

The above samples were tested as received in accordance with the current terms of accreditation and methods stated in NZS 3122:2009 with the exception of:

Chemical composition to ASTM C114-18

- Concrete Compressive Strength test results outside the scope of accreditation

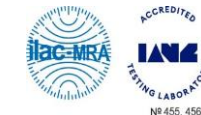
No result available at time of certificate issue

Sample retested

Vincent Lane

Works Chemist
Vincent Lane

Date issued: 18/09/20



Portland Works, Portland, Whangarei 0178

Page 1 of 3

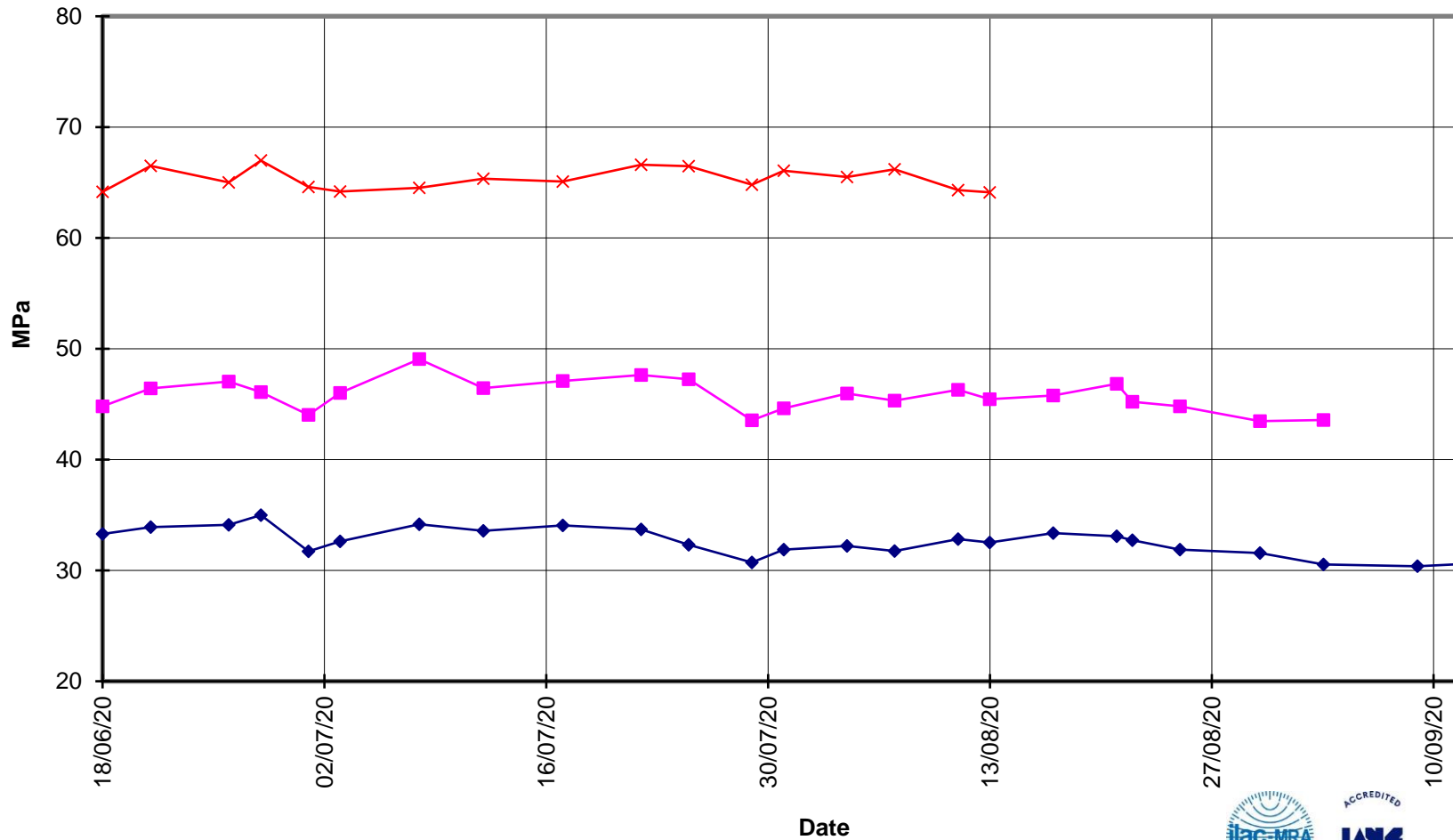


**EverSure™
Type GP Cement**

**Compressive Strength ISO-CEN Mortar
(Bulk Despatch)**



—x— 28 Days —■— 7 Days —◆— 3 Days





**EverSure™
Type GP Cement**

**Compressive Strength Concrete
(Bulk Despatch)**



—x— 28 Days —■— 7 Days —◆— 3 Days —■— Slump

