



# CERTIFICATE OF QUALITY

## EverSure™ Type GP Cement

NZS3122:2009 (Bulk Despatch)



Our  
NZ made  
cement is  
genuine  
NZ grade  
cement.

Issued to: National Sales Manager

Test Report No: 20#16

info@goldenbay.co.nz

Code	Week Ending / Voyage	Specific Surface Area	Normal Consistency	Initial Set	Final Set	Soundness	Compressive Strength						Free Lime	Sodium Equivalent (NaEq)	Sulphur Trioxide (SO3)	
							ISOCEN			Concrete						
							3 days	7 days	28 days	Slump	3 days	7 days				28 days
Mean		330	28.8	136	3:30	1	32.7	45.4	65.3	93.2	25.5	34.8	46.2	2.0	0.53	2.2
Standard Deviation		9	0.1	8	0:09	0.4	1.2	1.3	1.3	4.6	2.3	2.0	2.1	0.2	0.01	0.0
Min		315	28.7	120	3:15	0	30.6	43.1	63.3	90.0	22.8	32.3	43.4	1.3	0.52	2.2
Max		355	28.9	150	3:45	2	35.5	48.3	67.6	100.0	30.9	37.2	49.9	2.3	0.55	2.3
NZS 3122:2009 Requirements				45 max	6:00 max	5 max		35.0 min	45.0 min						0.6 max	3.5 max
Units		m2/kg	%	minutes	hrs:mins	mm	MPa	MPa	MPa	mm	MPa	MPa	MPa	%	%	%
200114-594-GP	14/01/20	320	28.8	135	3:30	1	31.4			95	22.8			1.8	0.54	2.2
200109-462-GP	9/01/20	325	28.9	135	3:30	1	30.9	44.1		100	22.8	32.3		2.2	0.52	2.2
200103-087-GP	01/01/20	320	28.9	120	3:30	1	32.4	44.4		90	25.9	36.3		1.8	0.54	2.2
191227-420-GP	27/12/19	325	28.9	135	3:30	1	30.8	46.4						1.9	0.53	2.2
191223-407-GP	23/12/19	320	28.8	135	3:30	1	30.7	43.1		90	25.2	33.5		1.8	0.53	2.2
191219-013-GP	19/12/19	340	28.8	135	3:15	1	30.6	47.0	67.0	100	23.1	33.0		2.0	0.52	2.2
191215-016-GP	15/12/19	325	28.8	120	3:15	1	31.8	45.6	63.5					1.3	0.55	2.2
191213-602-GP	13/12/19	325	28.7	135	3:30	1	32.5	44.9	65.3	90	25.8	36.3	43.4	2.0	0.55	2.2
191211-600-GP	11/12/19	330	28.7	135	3:30	1	31.6	45.0	64.8					2.1	0.54	2.2
191207-225-GP	07/12/19	335	28.7	120	3:15	1	32.2	43.7	63.8					1.8	0.55	2.3
191204-223-GP	04/12/19	340	28.7	135	3:15	1	33.4	44.7	64.6	90	28.3	37.0	49.9	2.0	0.54	2.2
191129-877-GP	29/11/19	335	28.7	135	3:30	1	33.6	45.8						2.0	0.52	2.2
191128-830-GP	25/11/19	330	28.7	135	3:45	2	33.5	46.6	63.9	90	24.4	32.8	47.0	2.3	0.53	2.2
191122-545-GP	22/11/19	355	28.7	135	3:45	2	35.5	48.3	67.6					2.0	0.53	2.2
191120-479-GP	20/11/19	330	28.7	135	3:30	1	33.8	46.6	65.8	100	23.5	32.4	44.7	2.2	0.54	2.2
191115-183-GP	15/11/19	330	28.7	135	3:30	1	33.8	45.7	64.5	100	25.2	34.7	43.6	2.0	0.52	2.2
191112-181-GP	12/11/19	325	28.8	135	3:30	1	32.9	45.2	65.5					2.1	0.54	2.2
191106-750-GP	06/11/19	335	28.8	150	3:30	1	34.0	46.4	67.2	90	30.9	37.2	45.7	2.1	0.53	2.2
191103-752-GP	03/11/19	335	28.8	150	3:45	2	33.1	43.8	65.1					2.3	0.53	2.2
191101-352-GP	01/11/19	330	28.7	150	3:30	1	33.7	44.6	64.7	90	28.1	37.1	47.3	2.3	0.54	2.2
191030-354-GP	30/10/19	340	28.7	135	3:30	2	33.3	45.7	66.1					2.0	0.53	2.2
191028-981-GP	28/10/19	320	28.7	150	3:30	1	33.5	46.3	65.3					2.3	0.53	2.2
191024-979-GP	24/10/19	325	28.7	135	3:30	0	33.1	44.8	67.4	90	25.4	36.9	47.4	2.3	0.53	2.2
191017-569-GP	17/10/19	315	28.8	135	3:45	1	33.6	43.4	65.2	90	25.4	33.2	47.1	2.0	0.52	2.2
191013-571-GP	13/10/19	330	28.7	135	3:45	1	33.0	46.9	63.3					2.1	0.52	2.2

This Report must not be reproduced except in full

The above samples were tested as received in accordance with the current terms of accreditation and methods stated in NZS 3122:2009 with the exception of:

Chemical composition to ASTM C114-18

- Concrete Compressive Strength test results outside the scope of accreditation



Portland Works, Portland, Whangarei 0178

Sample retested  
# No result available at time of certificate issue

Jim White  
Quality System Co-ordinator

Date issued: 24/01/2020

Page 1 of 3

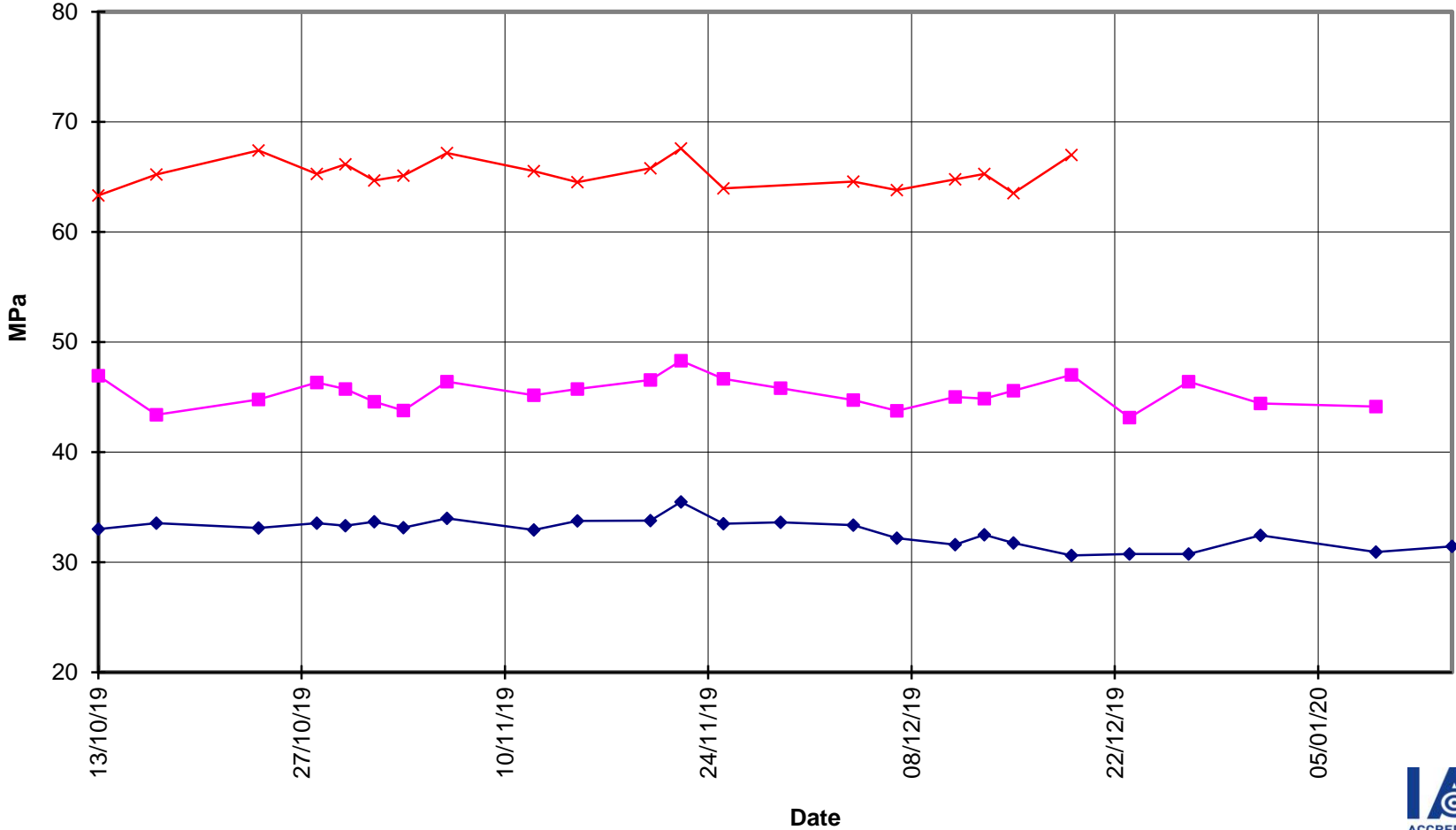


**EverSure™  
Type GP Cement**



**Compressive Strength ISO-CEN Mortar  
(Bulk Despatch)**

—x— 28 Days    —■— 7 Days    —◆— 3 Days





**EverSure™  
Type GP Cement**



**Compressive Strength Concrete  
(Bulk Despatch)**

—x— 28 Days —■— 7 Days —◆— 3 Days —■— Slump

