



CERTIFICATE OF QUALITY

EverSure™ Type GP Cement

NZS3122:2009 (Bulk Despatch)



Our
NZ made
cement is
genuine
NZ grade
cement.

Issued to: National Sales Manager

Test Report No: 19#266

info@goldenbay.co.nz

Code	Week Ending / Voyage	Specific Surface Area	Normal Consistency	Initial Set	Final Set	Soundness	Compressive Strength						Free Lime	Sodium Equivalent (NaEq)	Sulphur Trioxide (SO3)	
							ISOCEN			Concrete						
							3 days	7 days	28 days	Slump	3 days	7 days				28 days
Mean		333	28.8	133	3:30	1	33.6	45.5	65.0	93.3	26.2	35.2	46.4	2.0	0.52	2.2
Standard Deviation		9	0.1	11	0:08	0.5	0.6	1.0	1.3	5.4	2.3	2.1	1.5	0.2	0.01	0.0
Min		315	28.7	105	3:15	0	32.5	43.4	63.3	85.0	22.9	31.2	44.0	1.5	0.49	2.2
Max		350	29.2	150	3:45	2	34.6	47.6	67.4	100.0	28.0	37.2	48.7	2.3	0.54	2.3
NZS 3122:2009 Requirements				45 max	6:00 max	5 max		35.0 min	45.0 min						0.6 max	3.5 max
Units		m2/kg	%	minutes	hrs:mins	mm	MPa	MPa	MPa	mm	MPa	MPa	MPa	%	%	%
191115-183-GP	15/11/19	330	28.7	135	3:30	1	33.8			100	25.2			2.0	0.52	2.2
191112-181-GP	12/11/19	325	28.8	135	3:30	1	32.9							2.1	0.54	2.2
191106-750-GP	06/11/19	335	28.8	150	3:30	1	34.0	46.4		90	30.9	37.2		2.1	0.53	2.2
191103-752-GP	03/11/19	335	28.8	150	3:45	2	33.1	43.8						2.3	0.53	2.2
191101-352-GP	01/11/19	330	28.7	150	3:30	1	33.7	44.6		90	28.1	37.1		2.3	0.54	2.2
191030-354-GP	30/10/19	340	28.7	135	3:30	2	33.3	45.7						2.0	0.53	2.2
191028-981-GP	28/10/19	320	28.7	150	3:30	1	33.5	46.3						2.3	0.53	2.2
191024-979-GP	24/10/19	325	28.7	135	3:30	0	33.1	44.8		90	25.4	36.9		2.3	0.53	2.2
191017-569-GP	17/10/19	315	28.8	135	3:45	1	33.6	43.4	65.2	90	25.4	33.2	47.1	2.0	0.52	2.2
191013-571-GP	13/10/19	330	28.7	135	3:45	1	33.0	46.9	63.3					2.1	0.52	2.2
191010-383-GP	10/10/19	320	28.8	135	3:45	1	33.5	45.4	67.4					1.9	0.51	2.2
191007-381-GP	07/10/19	330	28.8	135	3:30	1	33.9	46.7	66.9	100	23.4	33.0	46.9	2.0	0.51	2.2
191004-056-GP	04/10/19	335	28.8	120	3:15	2	32.5	45.1	66.6					2.0	0.53	2.2
191001-055-GP	01/10/19	350	29.0	120	3:30	2	33.2	44.8	63.5	100	23.5	33.4	44.0	2.1	0.52	2.2
190928-792-GP	28/09/19	340	28.9	105	3:30	1	33.0	45.4	63.9	90	26.3	37.1	46.6	2.0	0.52	2.2
190926-725-GP	26/09/19	340	28.9	120	3:30	1	33.3	44.9	63.9					1.9	0.54	2.2
190920-348-GP	20/09/19	350	28.9	120	3:15	1	33.7	46.2	65.7	85	27.1	35.7	48.7	1.8	0.53	2.2
190917-351-GP	17/09/19	350	28.9	120	3:30	1	33.8	47.6	65.8					2.0	0.50	2.2
190914-039-GP	14/09/19	335	28.7	135	3:15	1	34.6	45.3	64.9					1.6	0.52	2.2
190912-037-GP	12/09/19	330	28.8	135	3:15	1	33.3	44.9	64.1	100	22.9	31.2	44.5	2.1	0.51	2.2
190908-823-GP	08/09/19	335	28.7	135	3:30	1	34.5	45.1	64.9					1.5	0.51	2.2
190905-577-GP	05/09/19	330	28.7	120	3:30	1	34.6	45.3	63.6	95	27.8	36.5	46.5	1.6	0.52	2.2
190901-238-GP	01/09/19	335	29.2	135	3:30	1	34.1	44.7	63.9					1.7	0.52	2.3
190830-235-GP	30/08/19	330	29.1	135	3:30	0	34.0	45.5	65.2	90.0	28.0	36.3	47.0	1.9	0.49	2.2
190824-958-GP	24/08/19	340	29.0	135	3:30	1	34.6	46.6	66.5					2.1	0.52	2.2

This Report must not be reproduced except in full

The above samples were tested as received in accordance with the current terms of accreditation and methods stated in NZS 3122:2009 with the exception of:

- Chemical composition to ASTM C114-18

- Concrete Compressive Strength test results outside the scope of accreditation



Portland Works, Portland, Whangarei 0178

Sample retested
No result available at time of certificate issue

Jim White
Quality System Co-ordinator

Date issued: 22/11/2019

Page 1 of 3

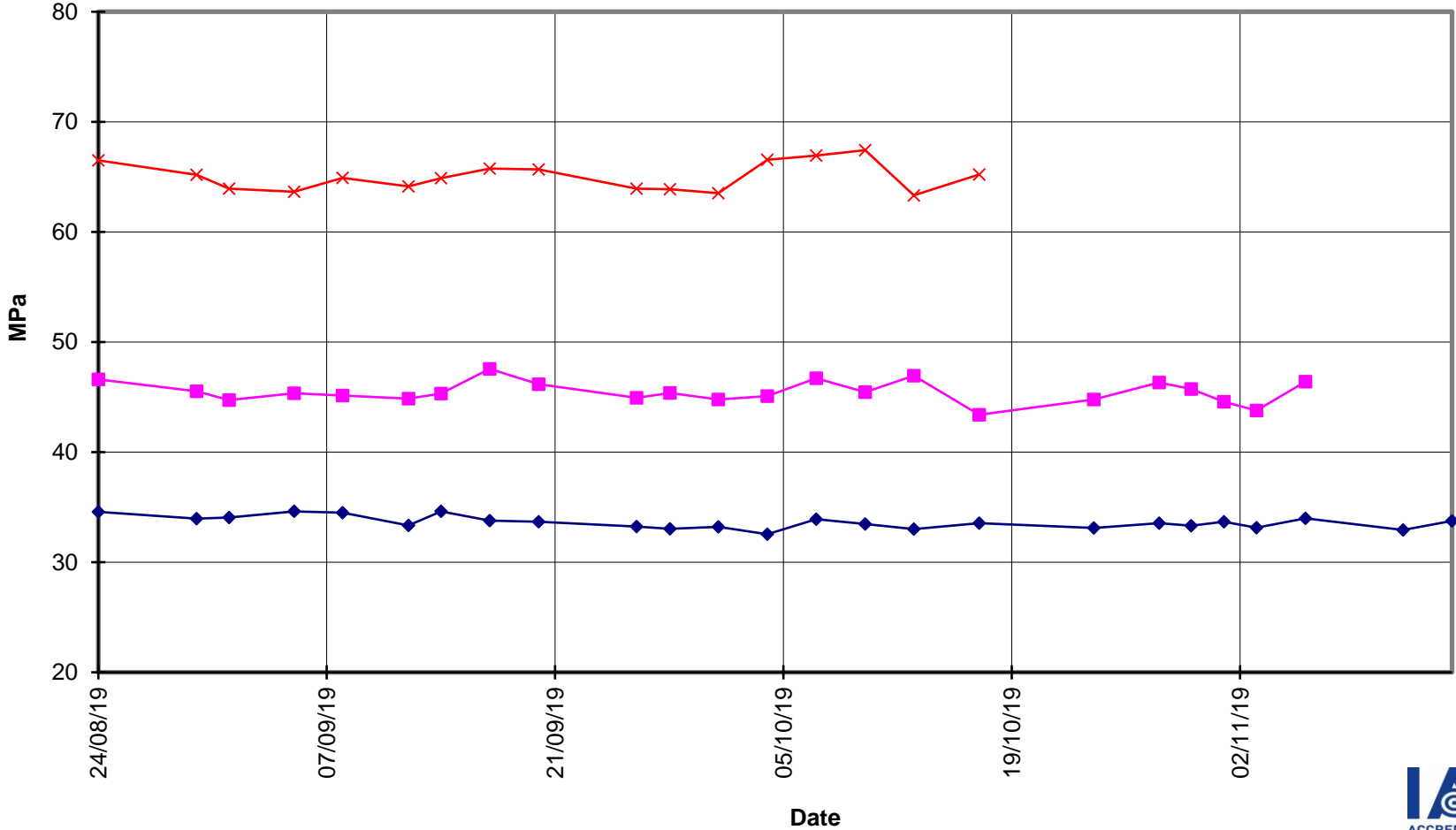


**EverSure™
Type GP Cement**



**Compressive Strength ISO-CEN Mortar
(Bulk Despatch)**

—x— 28 Days —■— 7 Days —◆— 3 Days





**EverSure™
Type GP Cement**

**Compressive Strength Concrete
(Bulk Despatch)**

